

PART OF S.E. 1/4 OF SEC. 34, T.6 N., R.1 W., S.1 B.M.

116

# EAST BENCH AT 29<sup>TH</sup>

A PLANNED RESIDENTIAL UNIT DEVELOPMENT

LOT - 27

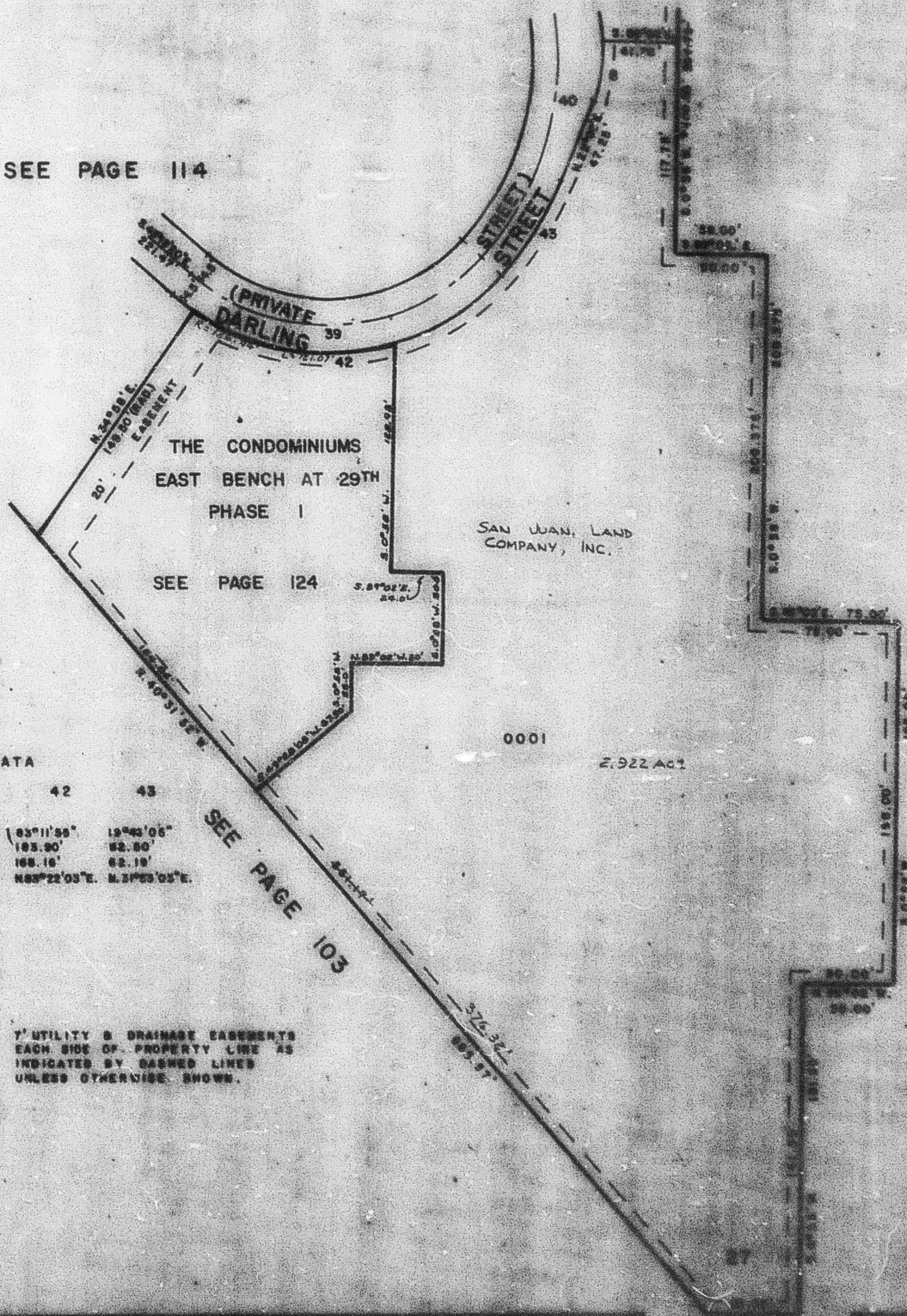
IN OGDEN CITY

SCALE 1" = 50'

TAXING UNIT 183

PREFIX 14-115

SEE PAGE 114



SEE PAGE 103

	CURVE	DATA		
	39	40	42	43
B-20.07	112.14'	106.66'		
S-22°10'34"	88°55'38"	73°48'30"	83°11'55"	19°45'05"
L-24.45'	126.01'	214.50'	103.90'	62.80'
L-24.10'	130.40'	200.00'	106.16'	62.19'
N10°25'30"E	N30°42'55"E	N83°22'03"E	N3°03'03"E	
T-	112.00'	125.00'		

SEE PAGE 103

FOR COMPLETE ENG. DATA  
SEE CHAS. DES. PLAT IN  
BOOK 33, PAGE 30

7' UTILITY & DRAINAGE EASEMENTS  
EACH SIDE OF PROPERTY LINE AS  
INDICATED BY DASHED LINES  
UNLESS OTHERWISE SHOWN.

4 AND LOTS 1-4, SEE DES. PLAT  
IN BK. 27, PG. 77.